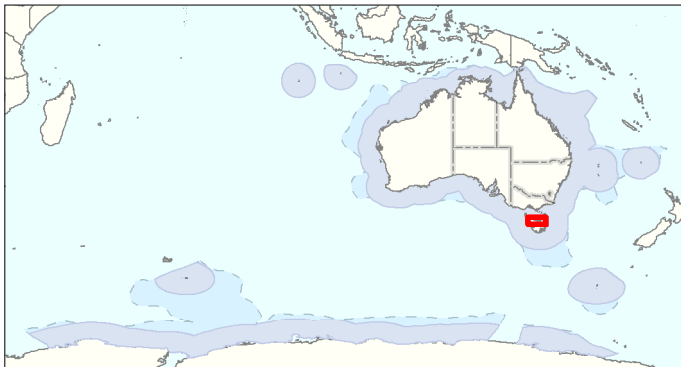
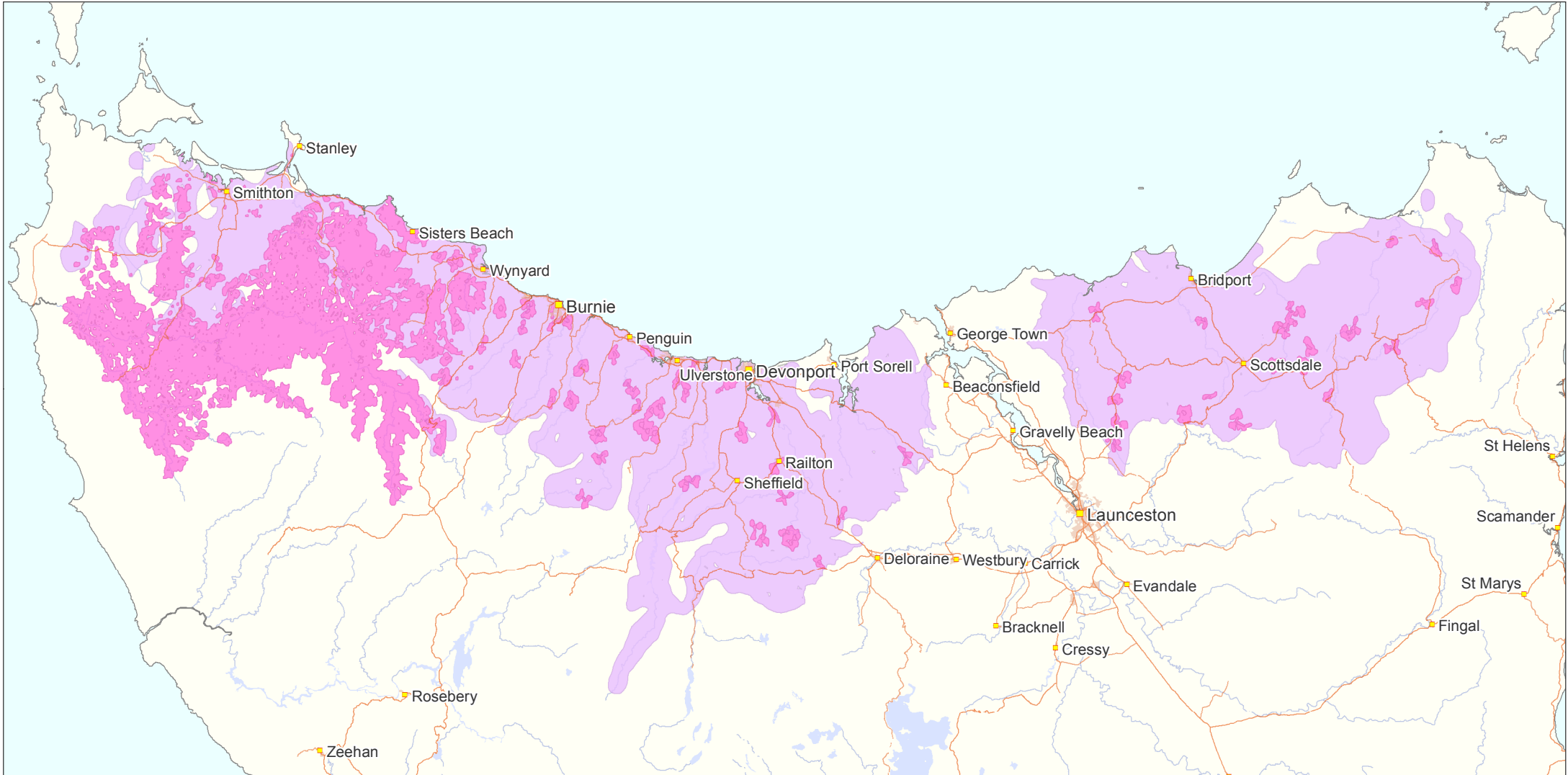


Spatial distribution of the Tasmanian giant freshwater lobster (*Astacopsis gouldi*)



0 10 20 40 60 80 km
© Copyright | Commonwealth of Australia, 2014.



Australian Government
Department of the Environment

Produced by:
Environmental Resources Information Network
Contextual data sources:
Dept. of the Environment (2014), *Species of National Environmental Significance Database*
Geoscience Australia (2006), *GEODATA TOPO 250K Series 3*
Geoscience Australia (2006), *Aust. Maritime Boundaries*

Indicative Map Only: This map has been compiled from datasets with a range of geographic scales and quality. Species or ecological communities distributions are indicative only and not to be used for local assessment. Local knowledge and information should be sought to confirm the presence of the species, or its habitat, at the location of interest.

Legend

- Species Known/Likely to Occur
- Species May Occur
- Cities & Towns
- State Border
- Roads (sealed)
- Roads (unsealed)
- Lakes/Reservoirs
- Non-perennial Lakes
- Major Rivers

20/10/2014

Disclaimer: The views and opinions expressed in this publication are those of the authors and do not necessarily reflect those of the Australian Government or the Minister for the Environment. While reasonable efforts have been made to ensure that the contents of this publication are factually correct, the Commonwealth does not accept responsibility for the accuracy or completeness of the contents, and shall not be liable for any loss or damage that may be occasioned directly or indirectly through the use of, or reliance on, the contents of this publication.