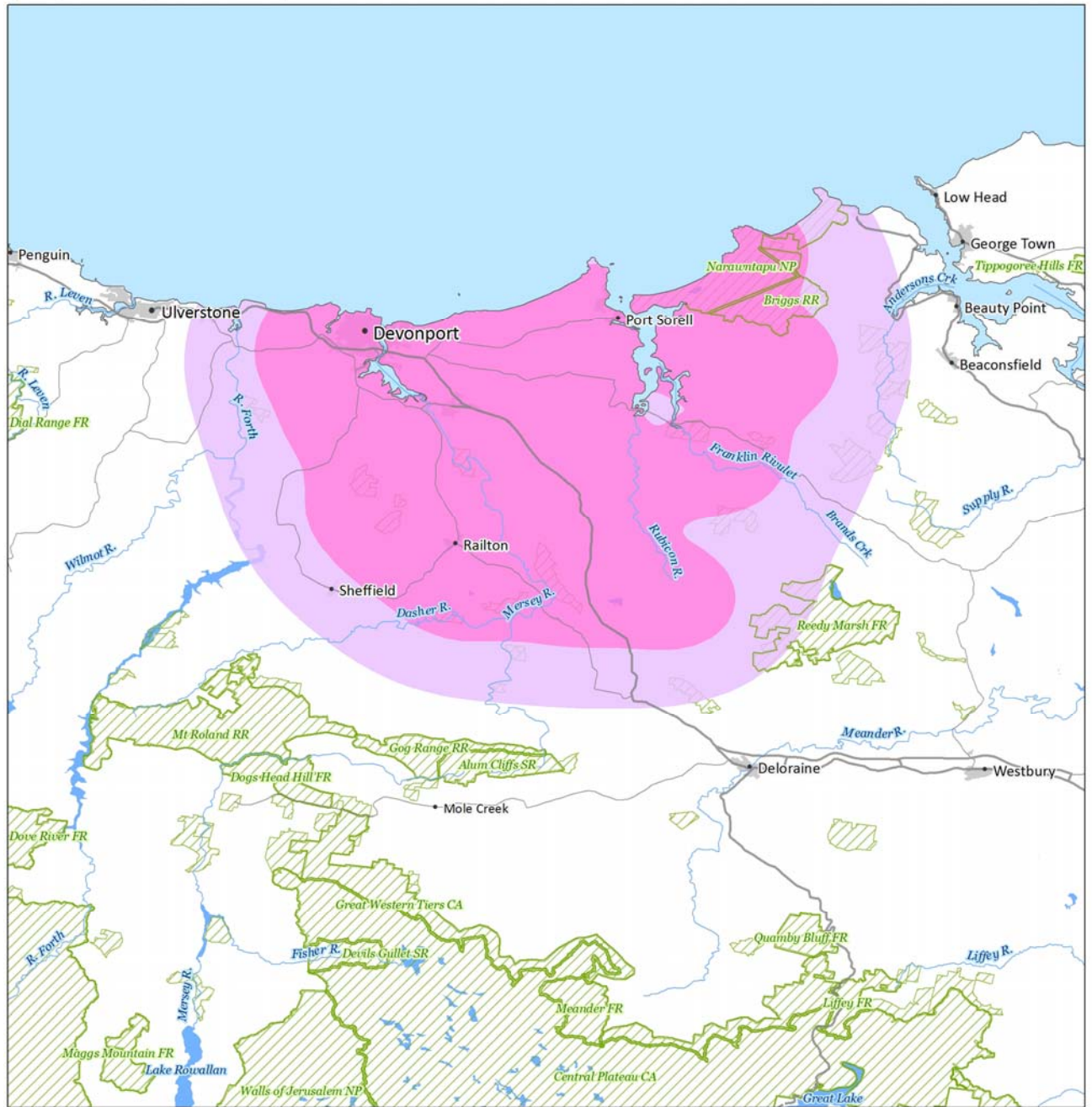


Map 4: Modelled distribution of the central north burrowing crayfish (*Engaeus granulatus*)



INDICATIVE MAP ONLY: For the latest departmental information, please refer to the Protected Matters Search Tool at [www.environment.gov.au/epbc/index.html](http://www.environment.gov.au/epbc/index.html)



**Australian Government**  
**Department of Sustainability, Environment,  
 Water, Population and Communities**

Produced by: Environmental Resources Information Network (ERIN)  
 COPYRIGHT Commonwealth of Australia, 2011

Contextual data sources:  
 DEWHA (2006), Collaborative Australian Protected Areas Database  
 Geoscience Australia (2006), Geodata Topo 250K Topographic Data

**Legend**

- Species Known/Likely to Occur
- Species May Occur
- Cities & Towns
- Roads
- Major Rivers
- Perennial Lake
- Non-perennial Lake

**MAP DESCRIPTION:** Modelled distribution comprises known observed locations of the species with appropriate buffer distances applied to these locations to reflect species biology and stated spatial imprecision in the source data. **CAVEAT:** The information presented in this map has been provided by a range of groups and agencies. While every effort has been made to ensure accuracy and completeness, no guarantee is given, nor responsibility taken by the Commonwealth for errors or omissions, and the Commonwealth does not accept responsibility in respect of any information or advice given in relation to, or as a consequence of, anything containing herein. **INDICATIVE MAP ONLY:** This map has been compiled from datasets with a range of geographic scales and quality. Species or ecological community distributions are indicative only and not to be used for local assessment. Local knowledge and information should be sought to confirm the presence of the species, or species habitat, at the location of interest.