

# Shrublands and Woodlands of the eastern Swan Coastal Plain Threatened Ecological Community

## LEGEND

- Ecological community likely to occur
- Major Roads
- Other Roads
- Rivers, Lakes and Reservoirs

**Note:**  
This is an indicative map only and it is not intended for fine scale assessment.

**Source:**  
Shrublands and Woodlands of the eastern Swan Coastal Plain threatened ecological community is from Environment Australia's Communities of National Environmental Significance database. The area mapped consists of areas where the community occurs according to Department of Environmental Protection Authority and others (1998) Perth's Bushplan. Volume 2 (Parts A,B and C). DEP. Boundaries defined using MAPINFO Australia Pty Ltd Detailed Road Centreline Data - Australia.

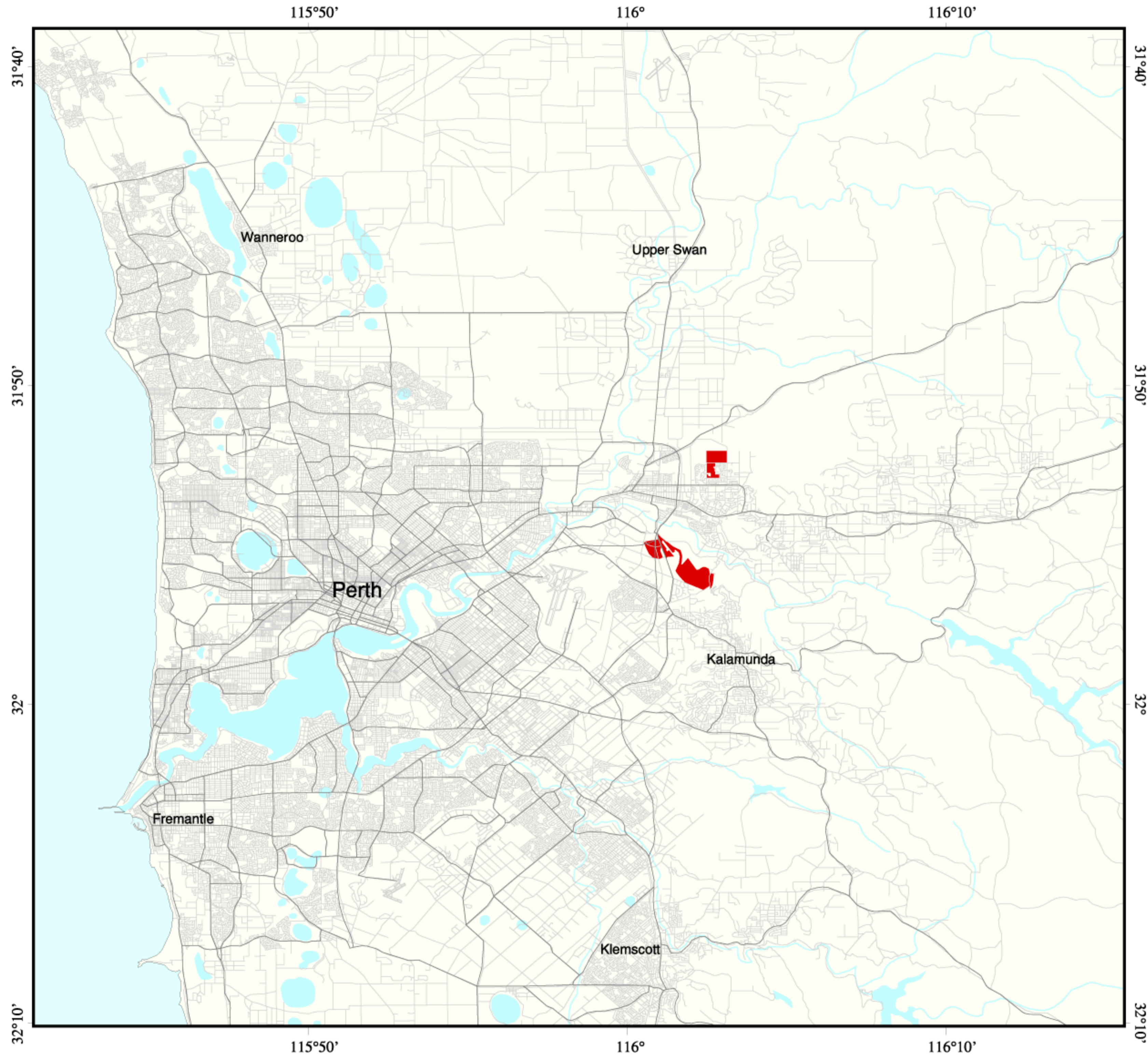
The TOPO250K data is Copyright (c) Commonwealth of Australia, 1994.

Detailed Road Centreline Data - Australia is Copyright (c) MAPINFO Australia Pty Ltd, 1997.

**Caveat:**  
The information presented in this map has been provided by a range of groups and agencies. While every effort has been made to ensure accuracy and completeness, no guarantee is given, nor responsibility taken by the Commonwealth for errors or omissions, and the Commonwealth does not accept responsibility in respect of any information or advice given in relation to, or as a consequence of, anything contained herein. The map has been collated from a range of sources, with data at various resolutions.

Data used are assumed to be correct as received from the data suppliers.

Produced by:  
Environmental Resources Information Network  
Environment Australia  
Commonwealth of Australia, Canberra  
April 2003  
COPYRIGHT  
Commonwealth of Australia, 2003



Projection: Geographic  
Spheroid: Australian National  
Datum: Australian Geodetic 1984

1:250000

