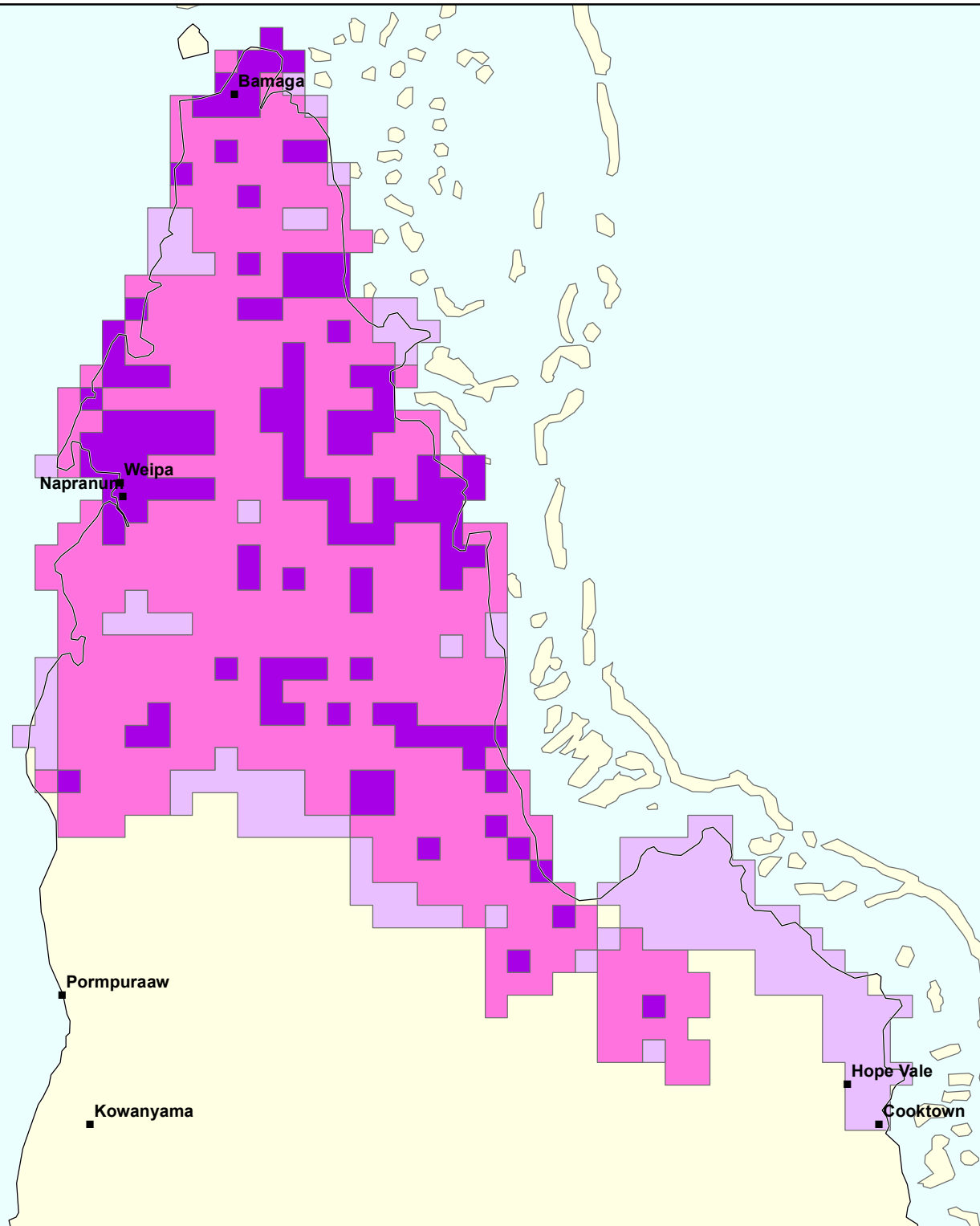


Distribution of the vulnerable palm cockatoo (*Australian*) (*Probosciger aterrimus macgillivrayi*)

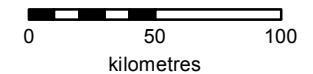
This distribution is based on observation data from Birdlife Australia, the Queensland Wildnet (DEHP), Australian Bird and Bat Banding Scheme (DotE). The known distribution comprises the observation points described above, buffered by 1 km. The likely distribution was defined by all contiguous suitable vegetation (closed forest, riparian systems, open forests dominated by *Corymbia* spp. and *Eucalyptus* spp., woodlands and open woodlands) within 10 kms of the modelled points. The possible distribution is an intersect of suitable vegetation and a Maxent-predicted area thresholded at a relatively low probability value, and circumscribes that region of CYP from north of Pormpuraaw on the west coast to south of Princess Charlotte Bay on the east coast, and generally equates with the subspecies' range reported in The Action Plan for Australian Birds 2010. Distribution has been generalised to 10km. Distribution mapped by ERIN Jul 2015



- Species known to occur
- Species likely to occur
- Species may occur



Australian Government
Department of the Environment and Energy



Produced by:
Environmental Resources Information Network
Australian Government
Department of the Environment and Energy
July 2016
© Commonwealth of Australia, 2016

Datum: Geocentric Datum of Australia 1994

Caveat: The information in this map has been compiled from a range of sources. While every effort has been made to ensure accuracy and completeness, no guarantee is given, nor responsibility taken by the Commonwealth for errors or omissions, and the Commonwealth does not accept responsibility in respect of any information or advice given in relation to, or as a consequence of, anything containing herein.