



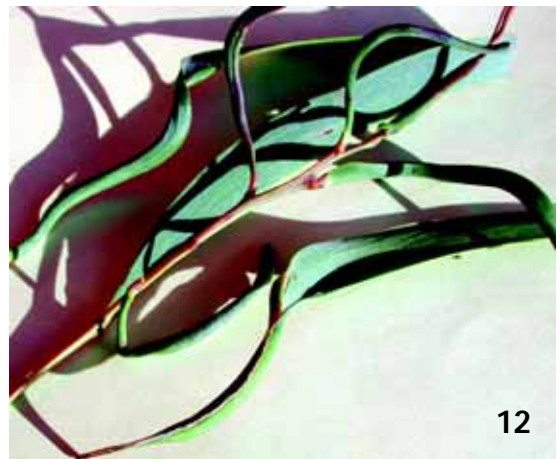
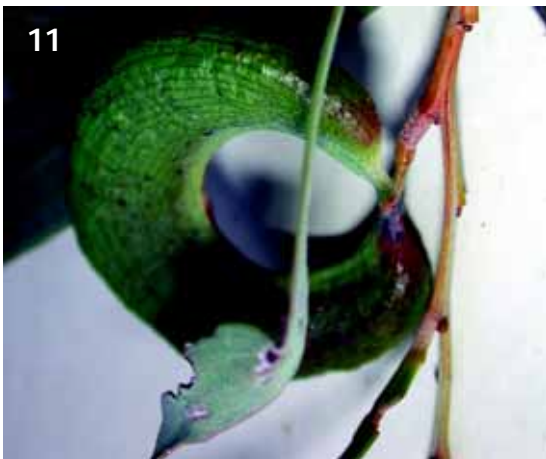
Fig. 1, *Acacia aneura* with galls of *Kladothrips arottrum*, Cobar, NSW.



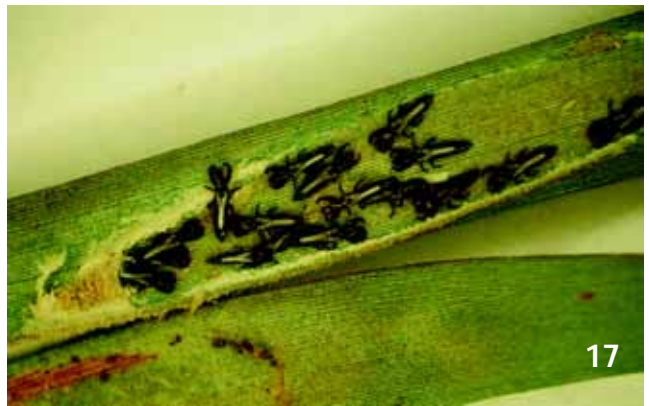
Figs 2–3. Phyllode development in Australian *Acacia* species: **2**, *Acacia* seedling with youngest leaves bipinnate but older leaves replaced by phyllodes; **3**, *Acacia melanoxylon* young plant with phyllodes developing as expanded petioles of bipinnate leaves.



Figs 4–8, *Kladothrips rodwayi* galls on phyllodes of *Acacia melanoxylon*: 4, female thrips in groove-like incipient gall; 5, within 24 hours this female is enclosed within a shallow gall; 6, two days later the gall is swelling; 7, mature galls, showing the closed lips on upper and swollen gall on lower surface; 8, *Kladothrips* eggs on inner wall of gall.



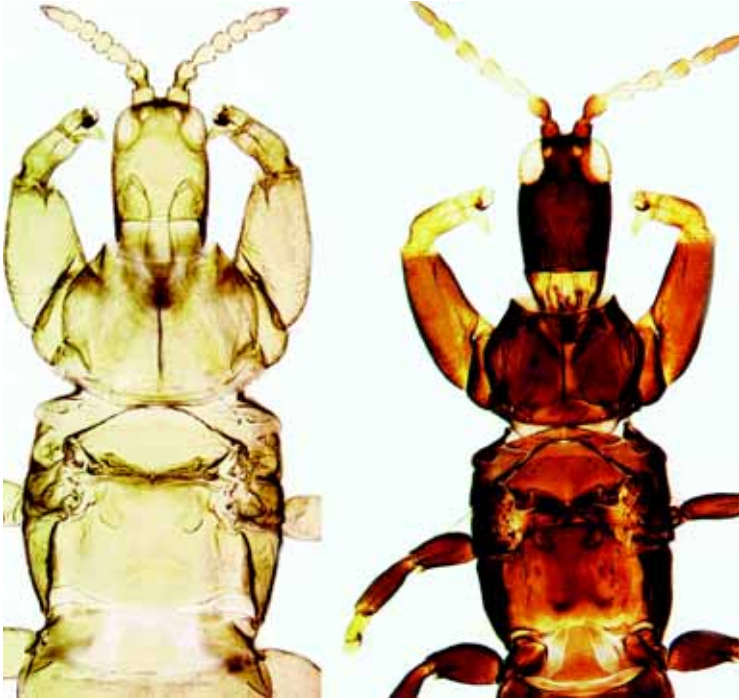
Figs 9–14, *Kladothrips* galls on various *Acacia* species: **9**, *Ac. grasbyi* with numerous spherical galls of *K. augonsaxos*, also one linear gall of *K. schwarzi* left of centre; **10**, *Ac. oswaldii* with gall of *K. intermedius*; **11**, *Ac. harpophylla* with large gall of *K. acaciae*; **12**, *Ac. harpophylla* with slender galls of *K. harpophyllae*; **13**, *Ac. pendula* with sub-spherical galls of *K. rugosus*; **14**, inner surface of *K. rugosus* gall on *Ac. pendula*, with physogastric female, male, eggs and larvae.



Figs 15–19, Thrips and the domiciles they construct using an anal secretion: **15**, *Carcinothrips leai* female; **16**, *Carcinothrips tania* female and immatures exposed in glued phyllode domicile; **17**, *Sartrithrips popinator* in domicile on *Ac. aprepta* [photo by Gerald Moritz]; **18**, *Ac. harpophylla* paired phyllodes glued by *Lichanothrips pulchra*; **19**, *Lichanothrips pulchra* domicile exposed, showing eggs in glue pillars.



Figs 20–21, *Dunatothrips aneurae* domicile on *Ac. aneura* phyllodes.



22

23



Figs 22–25, Dimorphism in *Kladothrips* species: 22, *K. morrissi* females, soldier and foundress; 23, *K. steni* females, aptera and macroptera.



Figs 24–27, Various *Acacia* thrips females: **24**, *Lichanothrips pastinus*, a domicile builder; **25**, *Grypotherips okrius*, an opportunist invader; **26**, *Warithrips polysensori*, an opportunist invader; **27**, *Xaniothrips leukandrus*, a domicile kleptoparasite.