






Lowland Native Grasslands of Tasmania

Legend

-  Major Roads
-  Major Rivers
-  IBRA regions

Threatened Ecological Community

Likely to Occur

-  Lowland *Poa labillardierei* grassland sub-type
-  Lowland *Themeda triandra* grassland sub-type

This is an indicative map only and it is not intended for fine scale assessment.

Source:

The mapped distribution of Lowland Temperate Grasslands of Tasmania (likely to occur) is from the Tasmanian Department of Primary Industries, Water and Environment's - TASVEG Mapping version 1.3 (2007). The following vegcodes are mapped; 'GPL' - Lowland *Poa labillardierei* grassland and 'GTL' - Lowland *Themeda triandra* grassland.

Interim Biogeographic Regionalisation for Australia (IBRA) Bioregions contributed by State/Territory nature and conservation agencies, DEWHA IBRA dataset version 6.1, 2004.

Roads 1:10 million © Commonwealth of Australia, Geoscience Australia, 2002.

Drainage 1:5 million © Commonwealth of Australia, Geoscience Australia, 2004.

Localities 1:10 million © Commonwealth of Australia, Geoscience Australia, 2002.

State Borders 1:250,000 © Commonwealth of Australia, Geoscience Australia, 2006.

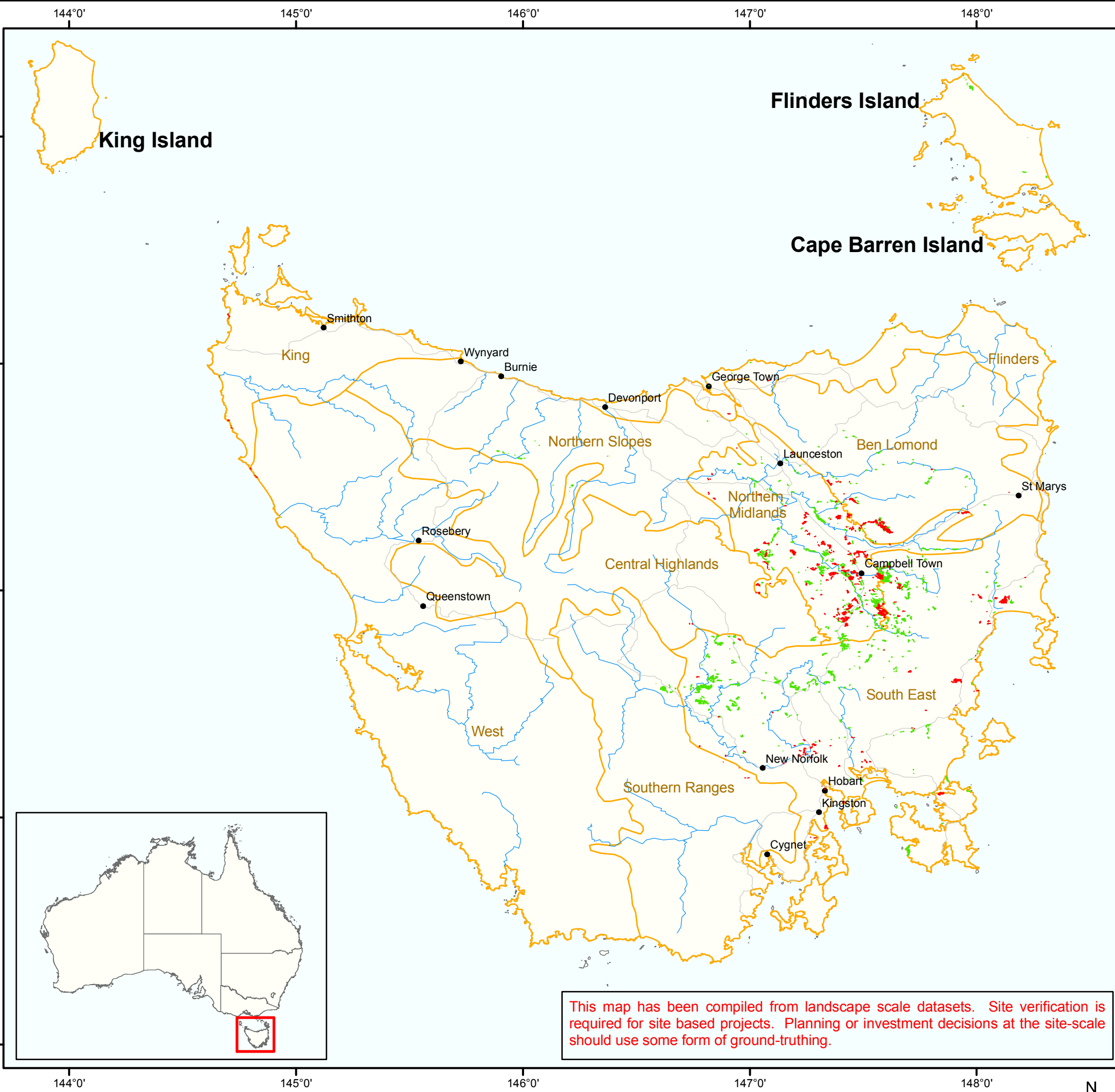
Caveat:

The information presented in this map has been provided by a range of groups and agencies. While every effort has been made to ensure accuracy and completeness, no guarantee is given, nor responsibility taken by the Commonwealth for errors or omissions, and the Commonwealth does not accept responsibility in respect of any information or advice given in relation to, or as a consequence of, anything containing herein. The map has been collated from a range of sources, with data at various resolutions. Data used are assumed to be correct as received from the data suppliers.

Produced by:

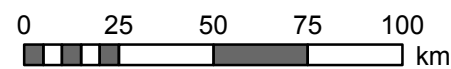
Environmental Resources Information Network (ERIN),
 Australian Government
 Department of the Environment, Water, Heritage and the Arts
 September 2009
 COPYRIGHT Commonwealth of Australia, 2009.

This map has been compiled from landscape scale datasets. Site verification is required for site based projects. Planning or investment decisions at the site-scale should use some form of ground-truthing.



Projection: Geographic
 Datum: GDA 1994

1:2,000,000



Australian Government
 Department of the Environment,
 Water, Heritage and the Arts