



Australian Government

Commonwealth Environmental Water Office

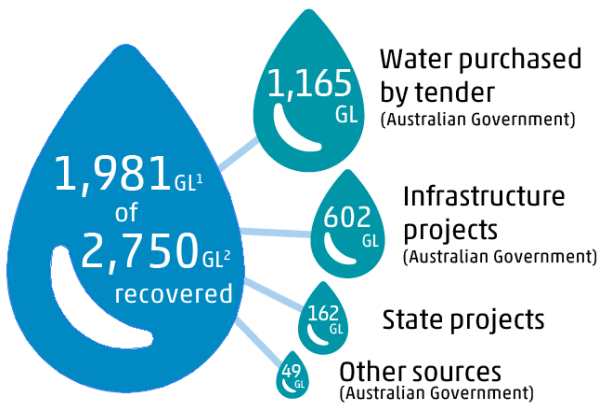


Commonwealth environmental water latest facts

August 2016

The Commonwealth Environmental Water Holder manages water entitlements and allocations acquired by the Australian Government, as part of national water reforms.

Progress towards the 2019 surface water recovery target, figures as at 30 June 2016



- 1 This figure is based on contracted water recovery and so includes commitments to acquire entitlements. Note that the smaller numbers are rounded to the nearest GL. As at 30 June 2016 the total recovered was 1,981.4 GL.
- 2 The recovery target could change due to the sustainable diversions limit adjustment process and the northern Basin review.

The Basin spans southern Queensland, the Australian Capital Territory, much of New South Wales, over half of Victoria and the southeast of South Australia. As such, the Commonwealth environmental water portfolio is large and complex with 75 water entitlement types across 17 Basin Plan regions.

Commonwealth Environmental Water Holder

75x Department of Agriculture & Water Resources acquires the Commonwealth's Entitlements, which are managed by the Commonwealth Environmental Water Holder

STATE WATER AUTHORITIES SET:

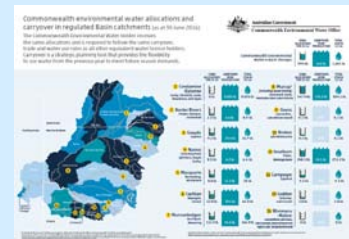
- Fees
- Rules
- Regulations
- Allocations

All Water Entitlement Owners Must Comply

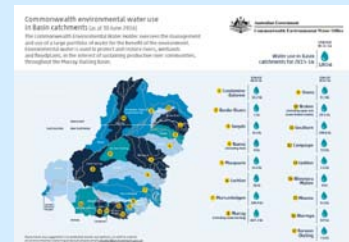
Water Storages, Use, Allocations & Carryover

Commonwealth environmental water can only be delivered if there is water available, the same as other water entitlement holders. We plan for a range of scenarios – from drought to wet – adjusting environmental water deliveries according to conditions.

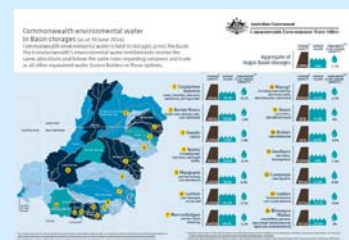
Allocations & Carryover



Water Use



Water Storages



For information about the water holdings please click [here](#).



Commonwealth environmental water latest facts

Environmental water is often used to supplement other water in the system. Depending on river operating rules, flow constraints, and climatic conditions, the Commonwealth Environmental Water Holder can agree to:



Use the water to meet identified environmental demands. For more information on use and managing water, [please click here](#).



Hold on to the water and carry it over for use in the next water year ('carryover'). For more information on carryover, [please click here](#).



Trade (sell or buy water) for equal or greater environmental benefit. For more information on the Trading framework [please click here](#).

Plans for 2016-17

Each year, the Commonwealth Environmental Water Holder plans to make water available throughout the Basin, in consultation with State counterparts, river operators, the Murray Darling Basin Authority (MDBA) scientists, as well as local community members. Plans for each region are [available here](#).

Overall environmental water resource availability	Demand for environmental water				
	Very High – water predominantly needed urgently	High – water predominantly needed this year	Moderate – water predominantly needed this year and/or next	Low – water predominantly not needed this year	Very low – water predominantly not needed this year and next
Very low	EXTENDED DRY Purpose: avoid damage to the environment			WET TO DRY	
Low		MODERATE OR AVERAGE Purpose: Protect and ensure capacity for recovery			
Moderate			MODERATE OR AVERAGE Purpose: Maintain ecological health and resilience		
High		WET FOLLOWING DRY			
Very high			EXTENDED WET Purpose: Improve ecological health and resilience		

Priorities according to the Murray-Darling Basin Authority

The MDBA's annual priorities support environmental watering planning. The [Basin Wide Strategy](#) can be found [here](#), and the latest priorities can be found [here](#).



Restoring our Rivers

Monitoring and evaluating environmental water use is helping to build knowledge about what works and what doesn't work. This 'adaptive management' approach helps the Commonwealth Environmental Water Holder make decisions on the Australian Government's large portfolio of environmental water and its future use. For latest environmental outcomes [please click here](#).

To view full reports for these areas, [please click here](#).



Local Engagement Officers

Localism relies on local knowledge and experience. The Commonwealth Environmental Water Office has six local engagement officers providing outreach to local communities throughout the Basin. You can contact your Local Engagement Officer [here](#).



Local Engagement Officers Erin Lenon, Adrian Clements, Linda Duffy, Rosemary Millward, Richard Mintern and Michelle Campbell, July 2016

Distributing this material

If there are any segments in this factsheet that your organisation would like to re-distribute, the Community Engagement & Communications team would be happy to provide you with materials. Please contact ewater@environment.gov.au for more information.

@theCEWH

W: www.environment.gov.au/water/cewo